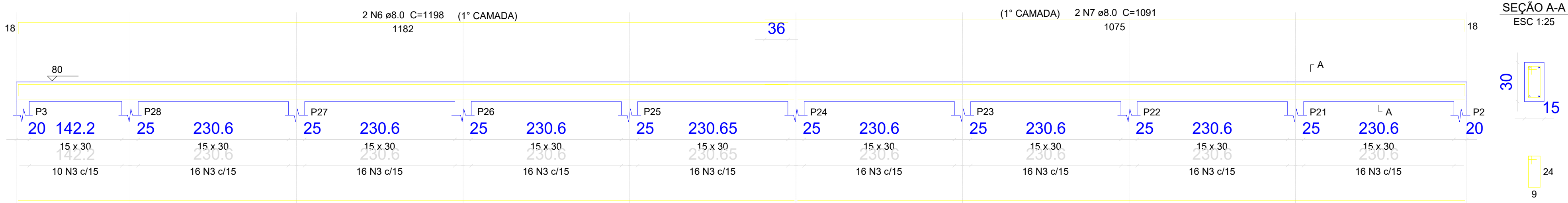
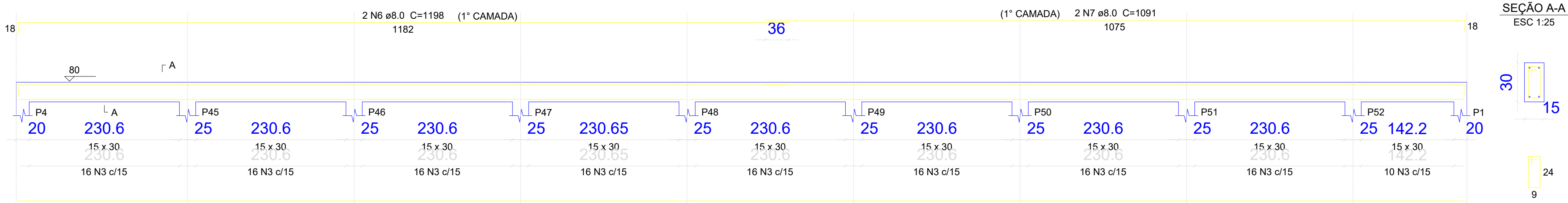


V2
ESC 1:50

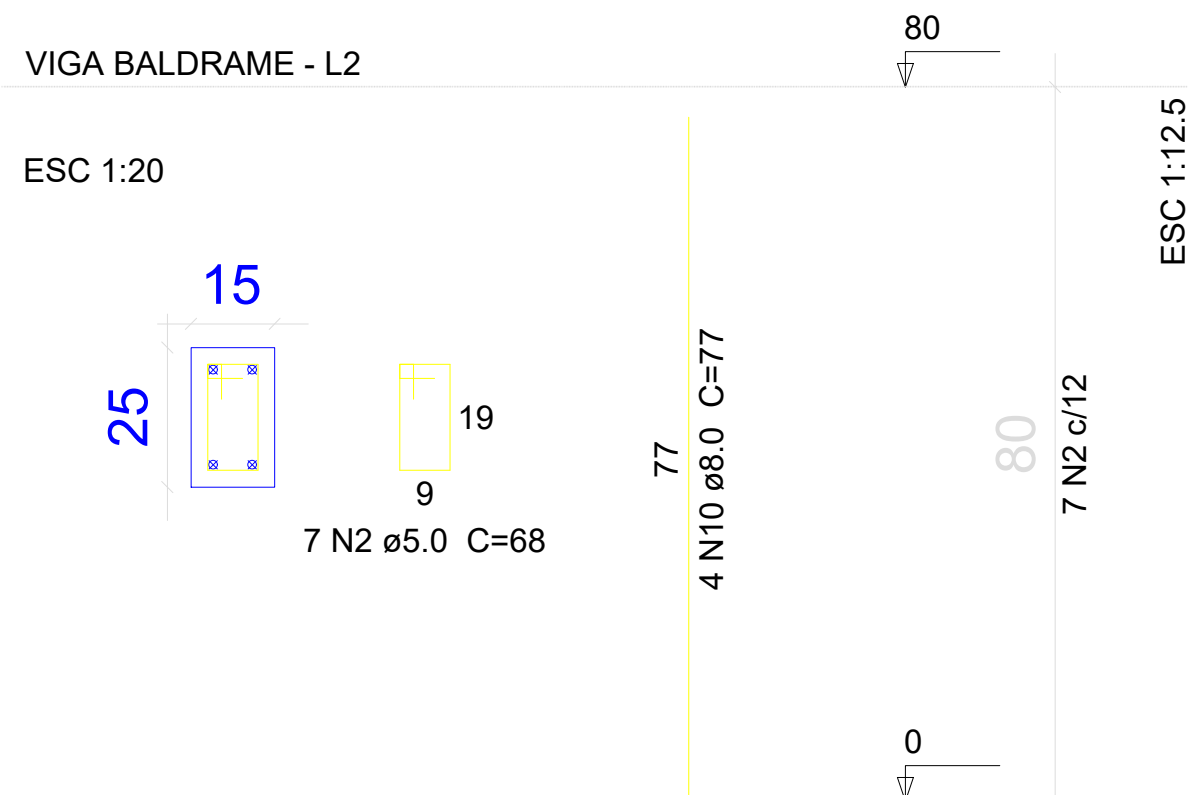
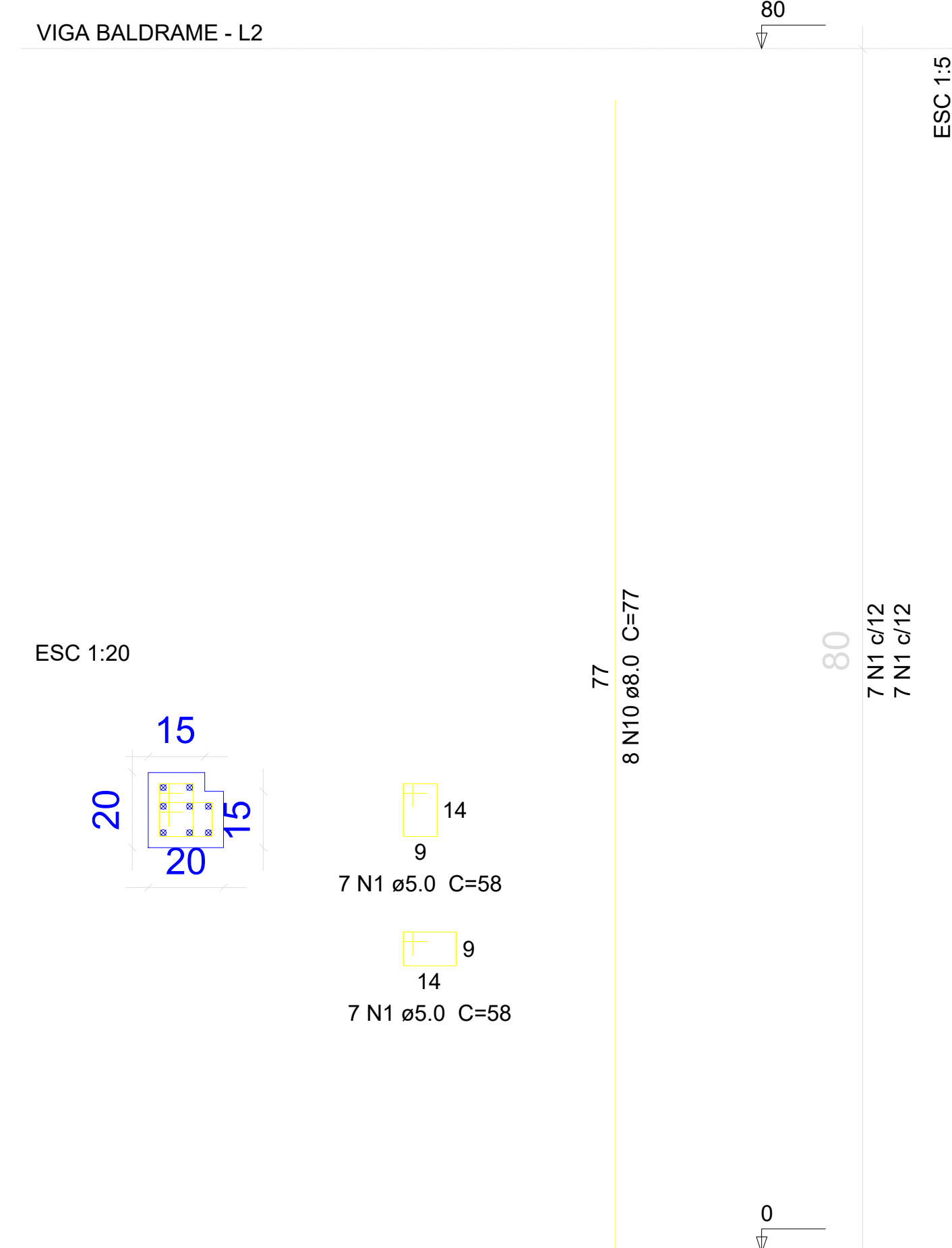


V4
ESC 1:50



P1=P2=P3=P4

P5=P6=P7=P8=P9=P10=P11=P12=P13=P14=P15
=P16=P17=P18=P19=P20=P21=P22=P23=P24
=P25=P26=P27=P28=P29=P30=P31=P32=P33
=P34=P35=P36=P37=P38=P39=P40=P41=P42
=P43=P44=P45=P46=P47=P48=P49=P50=P51
=P52



Nome	Seção	X (cm)	Y (cm)	Pilar Carga Max. (tf)	Carga Min. (tf)	Mx (kgf.m)	My (kgf.m)	Fx (tf)	Fy (tf)
P1	L 20x20x15x15	-2106.05	1106.00	0.4	0.0	0.0	0.0	0.1	0.1
P2	L 20x20x15x15	2106.00	1106.00	0.5	0.5	0.0	0.0	0.1	0.1
P3	L 20x20x15x15	2106.00	-1106.05	0.4	0.0	0.0	0.0	0.1	0.1
P4	L 20x20x15x15	-2106.05	-1106.05	0.5	0.5	0.0	0.0	0.1	0.1
P5	15x25	-1850.45	1106.00	0.5	0.5	0.0	0.0	0.1	0.0
P6	15x25	-1594.85	1106.00	0.5	0.5	0.0	0.0	0.1	0.0
P7	15x25	-1339.25	1106.00	0.5	0.5	0.0	0.0	0.1	0.0
P8	15x25	-1083.65	1106.00	0.5	0.5	0.0	0.0	0.1	0.0
P9	15x25	-828.05	1106.00	0.5	0.5	0.0	0.0	0.1	0.0
P10	15x25	-572.45	1106.00	0.5	0.5	0.0	0.0	0.1	0.0
P11	15x25	-316.85	1106.00	0.5	0.4	0.0	0.0	0.1	0.0
P12	15x25	572.40	1106.00	0.5	0.5	0.0	0.0	0.1	0.0
P13	15x25	114.90	1106.00	0.5	0.4	0.0	0.0	0.1	0.0
P14	15x25	316.80	1106.00	0.5	0.4	0.0	0.0	0.1	0.0
P15	15x25	572.40	1106.00	0.5	0.5	0.0	0.0	0.1	0.0
P16	15x25	828.00	1106.00	0.5	0.5	0.0	0.0	0.1	0.0
P17	15x25	1083.60	1106.00	0.5	0.5	0.0	0.0	0.1	0.0
P18	15x25	1339.20	1106.00	0.5	0.5	0.0	0.0	0.1	0.0
P19	15x25	1594.80	1106.00	0.5	0.5	0.0	0.0	0.1	0.0
P20	15x25	1850.40	1106.00	0.5	0.5	0.0	0.0	0.1	0.1
P21	15x25	2106.00	850.40	0.5	0.5	0.0	0.0	0.1	0.1
P22	15x25	2106.00	594.80	0.5	0.5	0.0	0.0	0.0	0.1
P23	15x25	2106.00	339.20	0.5	0.5	0.0	0.0	0.0	0.0
P24	15x25	2106.00	83.60	0.5	0.5	0.0	0.0	0.0	0.0
P25	15x25	2106.00	-172.05	0.5	0.5	0.0	0.0	0.0	0.0
P26	15x25	2106.00	-427.65	0.5	0.5	0.0	0.0	0.0	0.1
P27	15x25	2106.00	-683.25	0.5	0.5	0.0	0.0	0.0	0.1
P28	15x25	2106.00	-938.85	0.5	0.4	0.0	0.0	0.1	0.1
P29	15x25	1850.40	-1106.05	0.5	0.5	0.0	0.0	0.1	0.0
P30	15x25	1594.80	-1106.05	0.5	0.5	0.0	0.0	0.1	0.0
P31	15x25	1339.20	-1106.05	0.5	0.5	0.0	0.0	0.0	0.0
P32	15x25	1083.60	-1106.05	0.5	0.5	0.0	0.0	0.0	0.0
P33	15x25	828.00	-1106.05	0.5	0.5	0.0	0.0	0.0	0.0
P34	15x25	572.40	-1106.05	0.5	0.5	0.0	0.0	0.1	0.0
P35	15x25	316.80	-1106.05	0.5	0.4	0.0	0.0	0.1	0.0
P36	15x25	114.90	-1106.05	0.5	0.4	0.0	0.0	0.1	0.0
P37	15x25	-114.90	-1106.05	0.5	0.4	0.0	0.0	0.1	0.0
P38	15x25	-316.85	-1106.05	0.5	0.4	0.0	0.0	0.1	0.0
P39	15x25	-572.45	-1106.05	0.5	0.5	0.0	0.0	0.1	0.0
P40	15x25	-828.05	-1106.05	0.5	0.5	0.0	0.0	0.0	0.0
P41	15x25	-1083.65	-1106.05	0.5	0.5	0.0	0.0	0.0	0.0
P42	15x25	-1339.25	-1106.05	0.5	0.5	0.0	0.0	0.0	0.0
P43	15x25	-1594.85	-1106.05	0.5	0.5	0.0	0.0	0.1	0.0
P44	15x25	-1850.45	-1106.05	0.5	0.5	0.0	0.0	0.1	0.1
P45	15x25	-2106.05	-850.45	0.5	0.5	0.0	0.0	0.1	0.1
P46	15x25	-2106.05	-594.85	0.5	0.5	0.0	0.0	0.0	0.1
P47	15x25	-2106.05	-339.25	0.5	0.5	0.0	0.0	0.0	0.0
P48	15x25	-2106.05	-83.60	0.5	0.5	0.0	0.0	0.0	0.0
P49	15x25	-2106.05	172.00	0.5	0.5	0.0	0.0	0.0	0.0
P50	15x25	-2106.05	427.60	0.5	0.5	0.0	0.0	0.0	0.1
P51	15x25	-2106.05	683.20	0.5	0.5	0.0	0.0	0.0	0.1
P52	15x25	-2106.05	938.80	0.5	0.4	0.0	0.0	0.1	0.1

Relação do aço

PILARES:		4xP1		48xP5	
VIGA BALDRAME:		4xP1		48xP5	
V2		V2		V4	
AÇO	N	DIAM (mm)	QUANT (Barras)	UNIT (cm)	C.TOTAL (cm)
CA60	1	5.0	80	58	4640
	2	5.0	480	68	32640
	3	5.0	276	78	21528
CA50	4	8.0	4	1192	4768
	5	8.0	4	1024	4096
	6	8.0	4	1198	4792
	7	8.0	4	1091	4364
	8	8.0	224	77	17248

Resumo do aço

AÇO	DIAM (mm)	C.TOTAL (m)	PESO + 10 % (kg)
CA50	8.0	543.8	236
CA60	5.0	588.1	99.7
PESO TOTAL (kg)			
CA50	236		
CA60	99.7		

Volume de concreto (C-30) = 4.24 m³
Área de forma = 81.09 m²



TP ENG
Projetos e Construções

PROJETOS:
ARQUITETÔNICO
ESTRUTURAL
ELÉTRICO
HIDROSSANITÁRIO
COMBATE A INCÊNDIO

REFORMAS
SPDA
ASSESSORIAS
LAUDOS TÉCNICOS
OBRAS PÚBLICAS

Projeto:ESTRUTURAL

Folha/NºNº/Folha

05/05

Assunto:
IMPLANTAÇÃO DE CAMPO SOCIETY COM GRAMA SINTÉTICA E
INFRAESTRUTURA NO MUNICÍPIO DE COMBINADO – TO

Localização:
Rua Gercina Borges Teixeira - Combinado Tocantins - TO- CEP: 77.350-000

Cidade: COMBINADO -TO

Estado: Data:
TO MARÇO/2026

Proprietário:
Prefeitura Municipal de Combinado do Tocantins - TO

ÁREAS TOTAL: 1090.00 m².
ÁREAS CAMPO:924.00 m².
ÁREAS JOGO: 800.00 m².

CONTEUDO:
• ESTRUTURAL, PILARES E VIGA BALDRAME
• DETALHAMENTO

Cidade:

Autor do Projeto:

Responsável Técnico:

Custódio Costa Torres
Engenheiro Civil
CREA-TO 311.416/D

DIREITO RESERVADO LEI 5772 DE 21/12/1971

A REPRODUÇÃO OU EXECUÇÃO NO SEU TODO OU PARTE DESTE PROJETO, SEM A PREVIA AUTORIZAÇÃO DE SEU AUTOR, FICARÁ SUJEITA AS MEDIDAS LEGAIS CABÍVEIS, A ALTERAÇÃO DESTE PROJETO EXIME SEU AUTOR DE QUAISQUER RESPONSABILIDADES